



Caravan 208B Surveillance Aircraft

Surveillance Package



- Approved FAA STC# SA00691DE, SA00685DE, and SA00686DE
- Basic System Major Components
 - Paravion External Load Provisions
 - Paravion Mission Console
 - Churchill or AeroComputers Mission Computer
 - Avalex Video Monitors
 - FLIR 380HD or L-3 MX-15
 - Technosonic TDFM 9300
 - BMS/Troll/Vislink Downlink
 - Pilot Monitor
- Typical System Install Weight: 320 lbs.

Mission Console



- Approved FAA STC# SA00685DE
- Mission Console Components
 - Churchill or AeroComputers Mission Computer
 - Avalex Video Monitors
 - Technosonic TDFM 9300
 - Gimbal Hand Controller
 - Mission Computer Keyboard
 - Desk Work Station
- Installation Weight:
 - Mission Console: 150 lbs.



Mission Management



Churchill Navigation

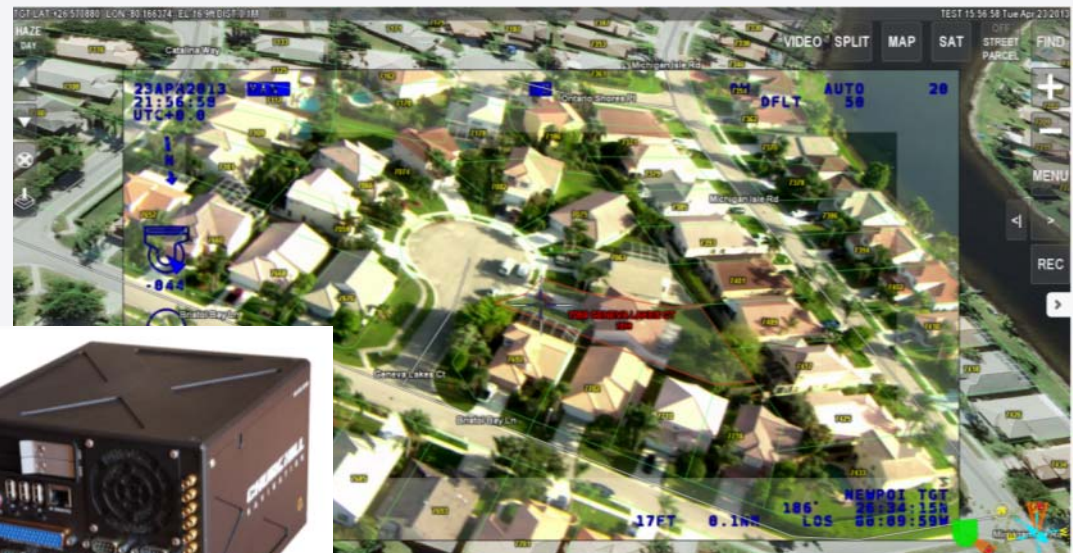
Augmented Reality System (ARS)

- Integrated with EO/IR Cameras, Downlink Systems, SAR Equipment, Radar Equipment
- Augmented Reality Overlay
- Synthetic Aerial Imagery Display
- Fast, Natural Language Search
- Labeled Streets, Addresses, Parcels, Businesses, etc. Over Live Video
- Unlimited Geo-Coded Markers
- Search Light Control
- Import Predefined Mission Targets
- Most Comprehensive Map Database
- Support Unlimited GIS data sets
- Instant Display of Nearest Street and Cross-Street
- Multiple Orientation Views
- Directional Guidance
- Built-in HD Dual-Channel Video Recording
- Smallest and Lightest System Payload



Worldwide Support

- Technical support – Call or email anytime with direct access to our software and hardware engineers.
- Training – Performed at your site with no charge for our travel expenses and time.
- Map updates – There is no charge for our maps and we will also install your provided map updates.
- Hardware Warranty – ARS has a three year hardware warranty which is extendable.



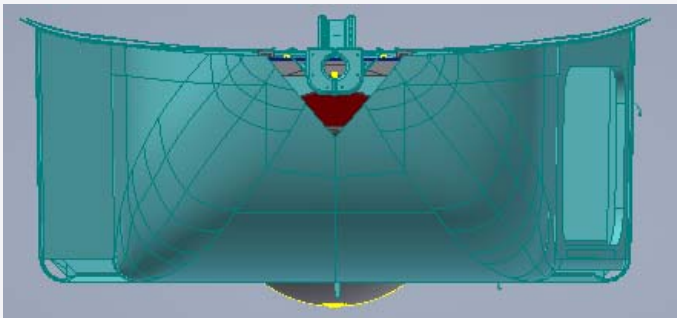
Retractable mount for camera in cargo pod

Beechcraft

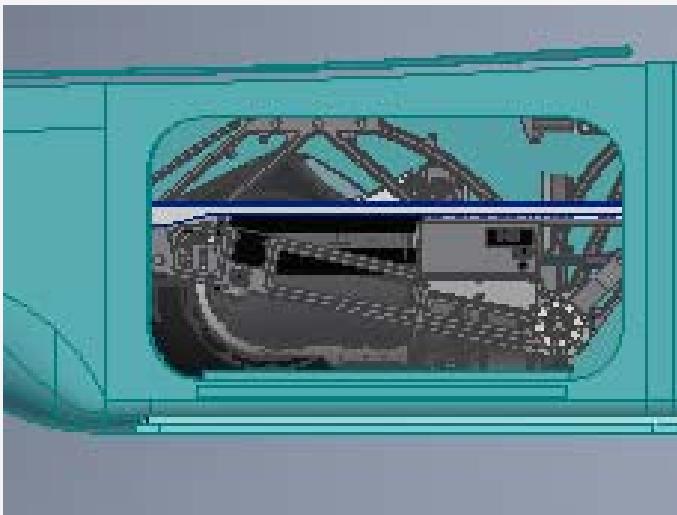
Cessna

Hawker

TEXTRON AVIATION

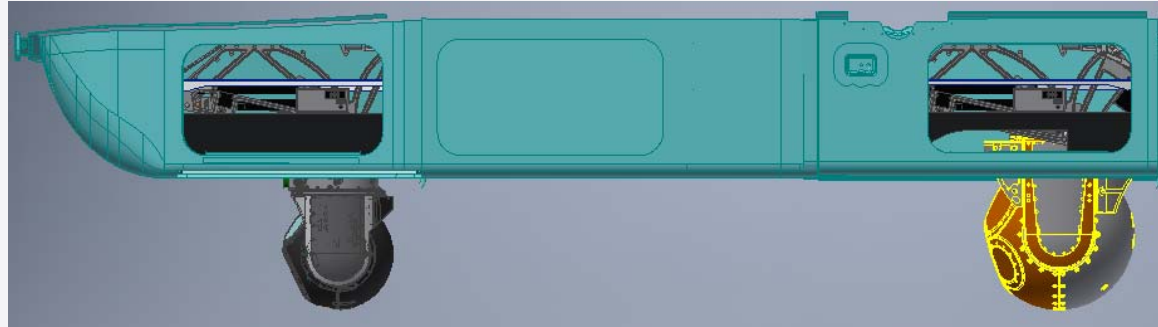
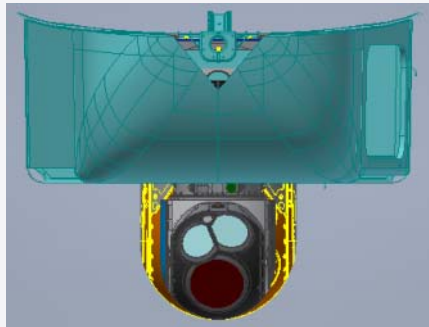
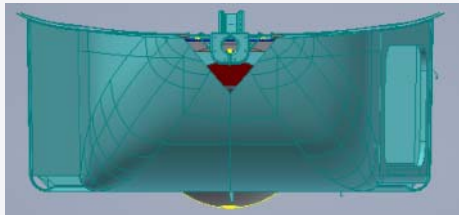


- Covert operations
- Provides EO/IR protection, take-off and landing
- Reduces drag en-route
- Can covertly hold up to a 15" Sensor



Multiple Turret Solution

- Multiple sensors can be installed into the cargo pod and maintain covert capability
- Both sensors can be integrated into singular mission system
- Either mount can hold a 15 inch Sensor covertly



This is not a certified solution. Planned certification 2017. As such all data is preliminary and subject to change.

Sensor Belly Mount



- Approved FAA STC# SA00691DE
- External Load Provisions Major Components
 - ELP Rail System
 - FLIR 380HD or L-3 Wescam MX-15
 - Rho Theta DF System
 - BMS/Troll/Vislink Downlink
- Installation Weight:
 - ELP: 70 lbs.
 - Gimbal: 100 lbs.
- Versatile Mounting System
 - Single Payload
 - Dual Payloads
 - Multiple/Triple Mission Payloads
- ELP Max Weight Limit 300 lbs per station.

HARD Point Provision locations and Concept ISR Pod

Beechcraft

Cessna

Hawker

TEXTRON AVIATION



10" EO/IR cameras



15" EO/IR cameras



20" EO/IR cameras

Data Links

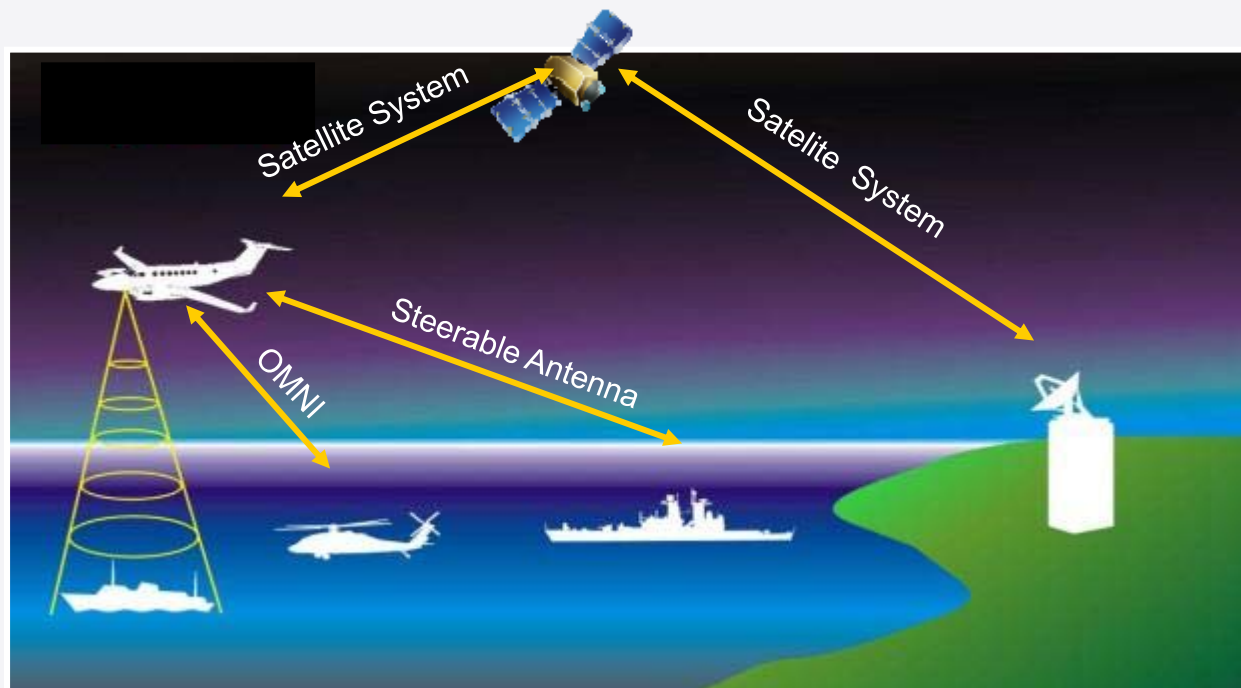
Beechcraft

Cessna

Hawker

TEXTRON AVIATION

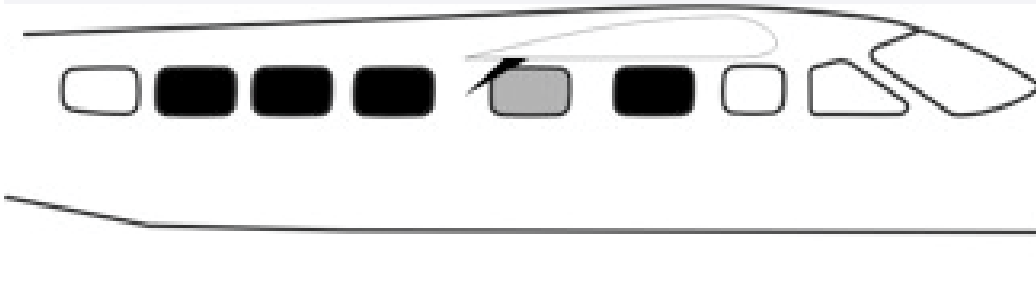
- CONOPS Determine the Appropriate Data Link
- Two types of Data Link
 - Line-of-Sight (LOS) – Omni: short range to 25 nm
Steerable Antenna: 25 nm – 75 nm
 - Beyond LOS – Single Images (Satellite Radio)
 - Streaming Video – Can Be Expensive



Customer CONOPS Determines Data Link Requirements

Bubble Observation Windows

Great Lakes Aero Products Bubble Windows



- **Typical bubble window locations**
- Bubble window available for this location only in the smaller domes
- STC # SA00897CH
- Made of .187" (.187") Plexiglas, Polycast, Cyro, or other Approved acrylic Material
- Meets or EXCEEDS all FAA/PMA requirements
- Windows are FAA/PMA Approved in Clear, Green, Gray and Dark Gray tints.



Typical 4" Window

Typical 6" Window

Typical 2" Window

Summary



- Cost Effective and Proven 208B Inspection STC Solutions.
- Experienced 208B ISR and Survey Integration Partners.
- Unmatched Factory Support and Customer Service.

